

CHAB 11.1.21

Homeless Services Update



Cares Campus - Safe Camp





Cares Campus - Safe Camp



- Stats: 6/17/21 – 10/22/21
 - 45 tents
 - 64 Total Participants Served
 - 21 Total Exits
 - 13 Successful Exits to Stable Housing
 - 8 currently scheduled for moves outs
 - 10 calls for emergency services
 - (4 Law Enforcement, 7 REMSA)

- Operator RFP open, Due Nov 12



Safe Camp Winter Plans

Cares Campus Emergency Shelter/Warming
ModPods

Participant Advisory Committee

Drainage

Elevated Cots

Tents/tarps

Sweatshirts/gloves/socks/hats/hand warmers

Wool Blankets/sleeping bags

Hot coffee/water



Cares Campus - Safe Camp

ModPods

- Cost per unit: \$13,725
- Arrival Date: late November
- Unit size: 8ft x 8ft x 8ft
- Heated and cooled
- Units purchased:
 - 50 for Safe Camp
 - 2 for isolation at Cares Campus

ModPod™ by **LIT | SOLUTIONS**

DURABLE AND SAFE MODULAR PODS FOR LIVING IN TRANSITION



Meeting people's most basic needs, our ModPod™ solutions are designed to maximize the usability and living area in small spaces. Our unique and durable ModPods are designed for maximum comfort with specific consideration to providing a secure personal space.

Engineered for Durability

Considerations Include exterior ACM (aluminum composite material) panels, interior Azdel Onboard® panels, powder coated metal frame systems, proprietary panel and corner connections that include weather tight seals, securing resistance to the outside elements.

Thoughtfully Designed

Using efficient manufacturing processes, we reduce our environmental impact producing little to no waste.

Carefully Selected Materials

Promoting a healthy, safe and comfortable living environment, our U.S.A. sourced raw materials use no formaldehydes, have low VOCs, are mold-resistant and are significantly insulated reducing ambient noise.

Designed for Ease of Install

With flexibility in mind our ModPods are uniquely designed to be easily assembled, with the ability to be disassembled, moved, and re-assembled while maintaining structural integrity.

Modularity

Intelligently designed and engineered, our ModPod system allows for expansion and contraction, filling many needs.



ModPod2.



ModPod3.

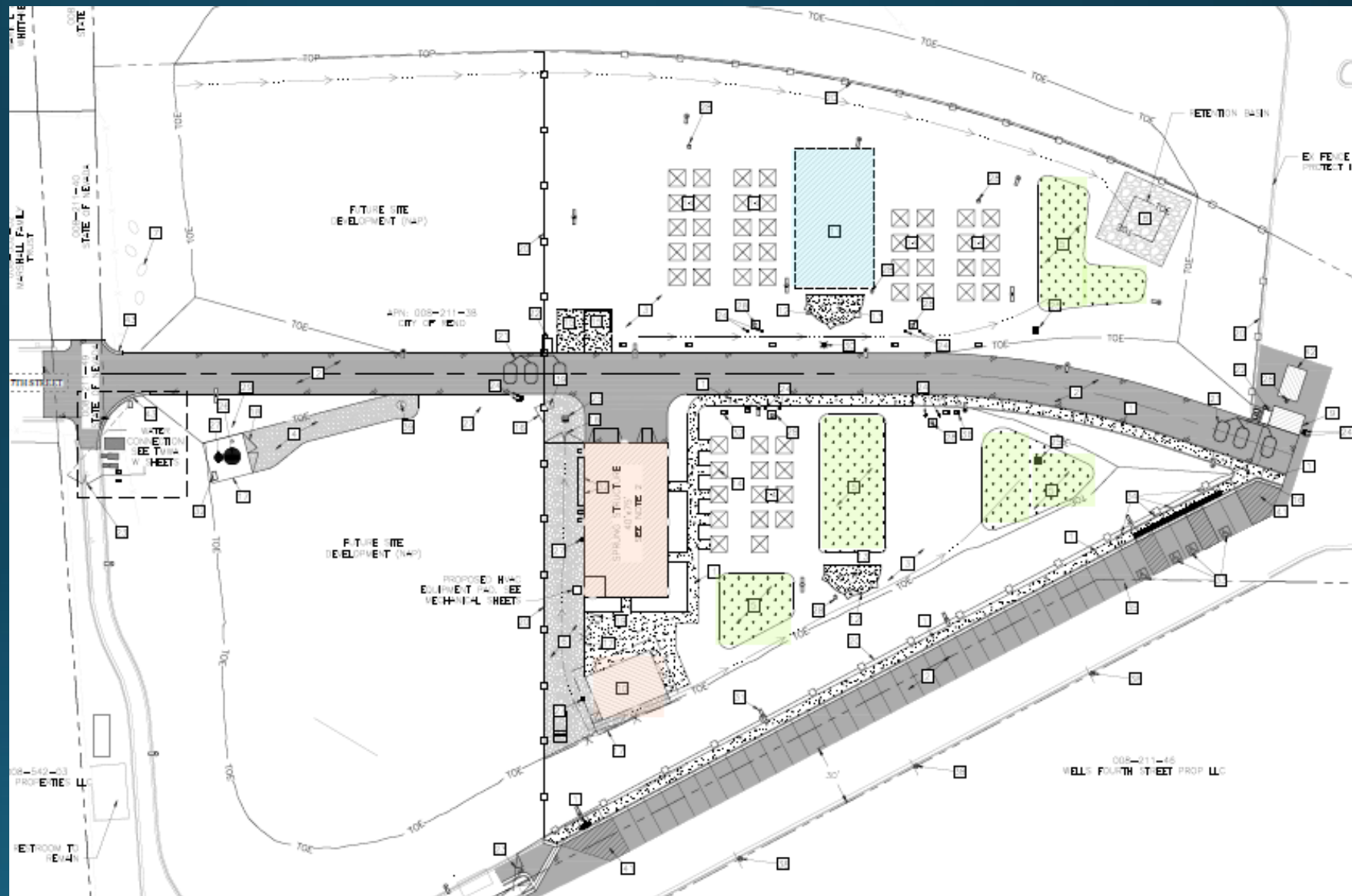


Safe Camp Construction

Budget = \$4.5 million

Bids = December 2, 2021

Construction is anticipated to start January 3, 2022





Cares Campus - Emergency Shelter



Cares Campus—Emergency Shelter

Transition from Reno to Washoe County

Secure campus

Women to Our Place

Training with Jon DeCarmine

Staffing: Hiring and review of needs and appropriate ratios

Updated capacity numbers: Beds = 604 Warming Area = 112

Overflow

Website dashboard



Cares Campus—Emergency Shelter

Shelter Census

Summary

Total Beds

Cares Campus

Safe Camp

Our Place

Filled Beds



16

Empty Beds in Cares Campus on Wednesday October 27, 2021.

Opened in May 2021, the Nevada Cares Campus provides emergency shelter and wrap-around services to help our region's most vulnerable residents. The campus includes a centralized shelter for men, couples, and residents with pets, cafeteria, and property storage.

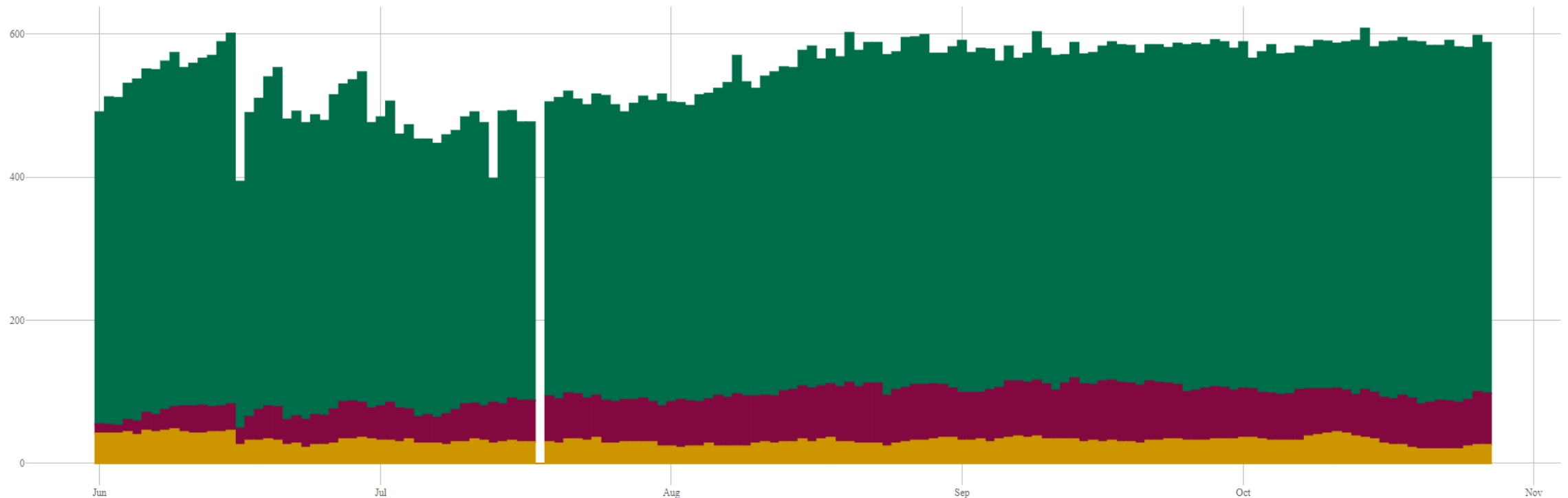
Cares Campus Bed Count Previous 31 days

Cares Campus Bed Count History

Men, Women, & Individuals in Couples

Pets

Cares Campus Women, Men, & Individuals in Couples Full Series





Cares Campus—Construction Update

Immediate
needs

Winterization

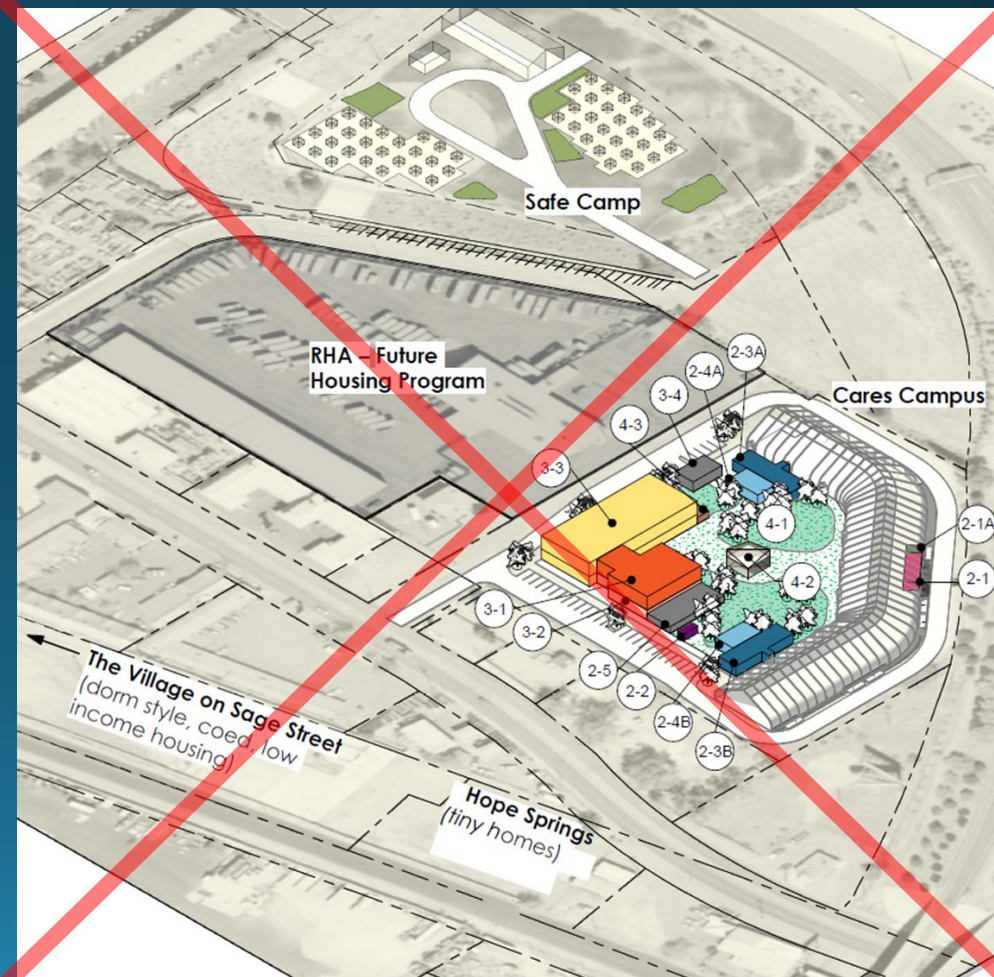
Bathrooms/showers

Overflow

Design
change

Kitchen

Misc. updates





Homeless Services Update

www.washoecounty.gov/homelessness/